

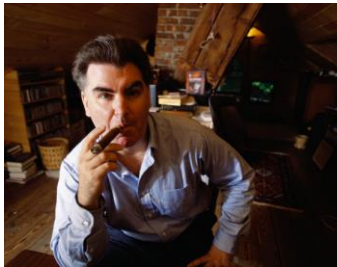
THE ELEPHANT

O V E R 2 0 0 M E M B E R S S T R O N G

HOW TO TALK TO A **LIBERAL**

With **MICHAEL WALSH**

TUESDAY, FEBRUARY 20th
SOCIAL 11:30 AM LUNCH 12:00 PM
RIVIERA COUNTRY CLUB
1250 DRIVE CAPRI, PACIFIC PALISADES, CA 90272



Michael Walsh, will cover key talking points on issues that are relevant in our current political climate. He will educate us on how to effectively communicate and debate our philosophy with liberals.

With, six critically acclaimed novels, six non-fiction books and a hit TV movie, journalist, author and screenwriter Michael Walsh has achieved the writer's trifecta: the author of two *New York Times* bestsellers, a major literary award winner and the co-writer of the Disney Channel's then-highest-rated show.

Walsh, a pianist who graduated from the Eastman School of Music with a degree in musicology, has worked as a reporter and music critic for the Rochester *Democrat & Chronicle*, the *San Francisco Examiner* and, from 1981 to 1997, *TIME Magazine*. He has lectured in universities around the country and abroad, including Tokyo and Munich. In addition to the American Book Award, he has won the ASCAP-Deems Taylor Award for distinguished music criticism, first prize for reporting by the New York State Publishers Association, and the Arlington Symphony piano competition. He is listed in the *International Who's Who in Music*, twelfth edition.

From 2009-2010, Walsh was Editor-in-Chief of Andrew Breitbart's web site, www.bigjournalism.com, as well as its founding editor.

www.MalibuBelAirRWF.org



UPCOMING EVENTS

February 20th: Michael Walsh

Topic: How to Talk to a Liberal
Palisades Rivera Country Club

Cost: \$30

Please RSVP to Rosemarie as soon as possible. We would like to have a preliminary count by February 14th

RSVP: 310.456.3190 or
reservations@maliburwf.org

March 20th: Rebecca Grossman &
Wendy Borchardt

Palisades Rivera Country Club

Cost: \$30



Remember to find and
friend MBA/RWF on
Facebook

*"Dedicated to promoting freedom, equality
and justice – the principles on which
this country was founded"*

President's Message

Dear Members and Associates,

Well, we are now into the 2014 election year, and there are many transitions already occurring. First, Henry Waxman has decided to retire after serving twenty terms in The House of Representatives. This is a major development for Los Angeles. Hopefully, the GOP will take this opportunity to educate the public about the benefits of looking and voting for a Republican candidate, especially with the incredible problems from the roll out of Obamacare.

Our packing party in January was an incredible success. Cindy Linke, shared with all the volunteers that this year set the highest record of 3,000 packages. It was a great job well done by all who came and participated in this wonderful event. Sadly, Cindy will be retiring as the chairperson, and we will all miss her incredible energy and organizational skills. It was her leadership that truly made this event so successful over the years.

On January 25th, the Los Angeles County Republican Women's Federated held their Leadership conference. There was an excellent turnout. We were fortunate to have three students from Pepperdine's College Republicans and one student from Mount Saint Mary's College join us.

The conference provided beneficial information on social media techniques, membership, methods on recruiting dynamic speakers, and raising funds for our clubs. LACWRF's President, Patti Adair, arranged for several of our representatives to also speak and share their accomplishments over the last year. I hope you will join us for next year's conference.

We are facing a tremendous headwind going forward when it comes to the value of our vote. Nancy Eisenhart is working hard to secure Guard our Vote. Please try to sign her petitions so we can get this on our ballot and vote for it. This is an important proposition by the people that requires voter identification when going to vote.

Staying active in our communities is so important. At times we might feel others are not interested in our message and will only tune us out. Sadly, isn't this what happened in countries like Germany? Saul Alinsky's methods will only work if we let the minority opinion dominate the majority. Most Americans are kind, generous, and conservative.

But we, the Republicans, have allowed the Democrats to frame every issue, thus controlling the narrative. It is now time for us to set the stage and stand strong with sound, factual narratives that hold true to our beliefs. Try to stay clear of social issues this year, as it is an easy target to change the subject and derail our core message. Thanks again for being a part of our organization. It is your support and energy that will make the difference going forward.

Cheers,

Victoria Davis
Co-President



Our co-Presidents with 3 students from Pepperdine College Republicans and 1 student from Mount Saint Mary's College.

MEMBERSHIP NEWS



Dear friends,

Many thanks to everyone who has joined or renewed their 2014 membership. If you haven't yet done so, please mail a check to our post office box or use PayPal via web site. While you're at it, please also make sure your contact information and preferences are up-to-date for the directory, e-mail and telephone communication.

A lot is at stake this year, with mid-term elections coming and the 2016 presidential election on the horizon. As a party, we need to regroup, refresh and respond strategically to the problems we face. It's easy to be *discouraged* and give up; it takes *courage* to make a difference. This year, I would like to challenge each of you to invite at least one prospective member to at least one of our events. We need to increase our membership and rebuild our party. Coming together as a group gives us new opportunities to educate ourselves on important topical issues, share ideas, compare notes and learn creative ways to reach others.

Courage,
Laura Borda
Membership Vice President
(310) 589-0850 bordafamily@aol.com

WOULD YOU LIKE TO RECEIVE THE NEWSLETTER BY EMAIL OR MAIL ONLY?

In order to save on monthly printing cost, please let us know if you would like to receive the Newsletter by Email or Mail only. Send requests via email or phone to: dnlacy1@yahoo.com or 310.457.1600

WOULD YOU LIKE A NAMETAG?



To order, please see the membership application. Complementary name tags are available upon request to Platinum and Diamond sponsors.

THANK YOU FOR RENEWING FOR 2014 AND WELCOME TO OUR TWO NEW MEMBERS THIS MONTH!

NEW MEMBERS

Pamela Sandall

RENEWING SPONSORS

Platinum Sponsors

Mildred "Millie" Reid
Ruth Loeb

Gold Sponsors

Beverly Estill

Silver Sponsors

Rosemarie Ihde
Diane Lerner
Deborah Ruth

GENERAL MEMBERSHIP RENEWALS

Stephanie Atwill
Heidi Bernard
Wendy Boehm
Wendy Borchardt
Bonnie Borris
Terri Cleveland
Robyn Fuchs
Patricia Honey
Jennifer Kutner
Dianelle Lacy
Jane Moffitt
Mary Purucker

NEW ASSOCIATE MEMBERS

Theresa Chase
Prinhartini "Tintien" Hopfer

ASSOCIATE RENEWALS

Valerie D' Addona
Floyd "Bud" Hower
Rosalie Olson
Beatrice Restifo
Linda Toomajian
Lana Van Aggelen

SEIZING RETIREMENT ACCOUNTS by Jerome Corsi *WND.COM*

Click here to read the entire Article [Seizing Retirement Accounts](#)

NEW YORK – When you hear, “Hello, I’m from the federal government and I want to help you manage your retirement savings,” the best advice is to run away, as fast as you can.

In November 2012, [WND reported](#) the Obama administration was exploring a creative way to finance continuing trillion-dollar annual federal budget deficits through forcing private citizens holding IRA and 401(k) accounts to purchase Treasury bonds by mandating the placement of government-structured annuities in their retirement accounts. [WND reported](#) the U.S. Department of Labor and the Treasury Department held joint hearings on whether government lifetime annuity options funded by U.S. Treasury debt should be required for private retirement accounts, including IRAs and 401(k) plans.

It looks like that day is getting closer.

Packaged as a new retirement-savers plan designed for workers whose employers do not offer IRAs or 401(k), President Obama announced in his State of the Union address Tuesday an initiative that allows first-time savers to start building up their savings in Treasury bonds that could eventually be converted into traditional IRAs or 401(k) plans.

While it is not as onerous as an Obama administration directive demanding a certain percentage of individual retirement savings must be invested in U.S. Treasury bonds, it is a first step in that direction.

California’s Covered California (CA Obamacare) Scandal by Jillian Kay Melchior *NationalReviewOnline.com*

Click here to read the entire Article [California Obamacare Scandal](#)

At least 43 convicted criminals are working as Obamacare navigators in California, including three individuals with records of significant financial crimes.

Although some of the offenses are decades old, and although convicted criminals account for only 1 percent of the 3,729 certified enrollment counselors in the state, Californians still have good cause to be concerned about their privacy.

Even a single crooked navigator could do significant harm to the public. That’s because when navigators sign consumers up for health insurance under the Affordable Care Act, they have access to lots of private information, including Social Security numbers, home addresses, and financial data – basically, everything on the wish list of identity thieves and fraudsters. Navigators also are likely to work with a population that is more vulnerable than average.

Limited statistics released by Covered California – the state’s new health-insurance exchange – showed that one navigator has repeat forgery offenses – one in 1982, then another in 1994, with a burglary in between. Another had two forgery convictions in 1988, in addition to a domestic-violence charge a decade later. Another committed welfare fraud in 1999 and had shoplifted on at least two prior occasions. Since 2000, individuals now working as navigators have committed crimes including child abuse, battery, petty theft, and evading a police officer. At least seven navigators have multiple convictions. The information released covered only certified enrollment counselors, one of the three types of navigators working in California.

Last year, California’s Republican lawmakers unsuccessfully requested that Covered California establish a policy forbidding anyone with a prior conviction, regardless of the date, to work as a navigator.

CONTACT YOUR ELECTED OFFICIALS

U.S. President

Barack Obama (D)
1600 Pennsylvania Ave. NW
Washington, DC 20500
202-456-1111
president@whitehouse.gov
www.whitehouse.gov

U.S. Senate

Dianne Feinstein (D)
331 Hart Senate Office Building
Washington, DC 20510
202-224-3841
senator@feinstein.senate.gov
www.feinstein.senate.gov

Barbara Boxer (D)
112 Hart Senate Office Building
Washington, DC 20510
202-224-3553
senator@boxer.senate.gov
www.boxer.senate.gov

Governor

Jerry Brown (D)
State Capitol, Suite 1173
Sacramento, CA 95814
916-445-2841
governor@governor.ca.gov
www.gov.ca.gov

U.S. House

24th Lois Capps (D)
2231 Rayburn Office Building
Washington, DC 20515
(202) 225-3601
(805) 730-1710 district office
<http://capps.house.gov/>

26th Julia Brownley (D)
1019 LHOB
Washington, DC 20515
202-225-5811

30th Brad Sherman (D)
2242 Rayburn Office Building
Washington, DC 20515
202-225-5911
818-501-9200 district office
sherman.personal@mail.house.gov

33rd Henry Waxman (D)
2204 Rayburn Office Building
Washington, DC 20515
202-225-3976
310-652-3095 district office
www.henrywaxman.house.gov

State Senate

26th Curren D. Price, Jr. (D)
State Capitol, Room 2057
Sacramento, CA 95814
916-651-4026
(213)745-6656 district office
sd26.senate.ca.gov

27th Fran Pavley (D)
State Capitol, Room 4035
Sacramento, CA 95814
916-651-4027
310-314-5214 district office
sd27.senate.ca.gov

28th Ted W. Lieu (D)
State Capitol, Room 4061
Sacramento, CA 95814
916-651-4028
310-318-6994 district office
sd28.senate.ca.gov

State Assembly

50th Richard Bloom (D)
State Capitol P.O. Box 942849
Sacramento, CA 95814
916-319-2050
asmdc.org/members/a50/

54th Holly Mitchell (D)
P. O. Box 942849
Sacramento, CA 94249
916-319-2054
310-342-1070 district office
asmdc.org/members/a54/

62nd Steven C. Bradford (D)
State Capitol PO Box 942849
Sacramento, CA 95814
916-319-2062
310-412-6400 district office
asmdc.org/members/a6

45th Bob Blumenfield (D)
P.O. Box 942849
Sacramento, CA 94249
916-319-2045
818-904-3840 district office
<http://asmdc.org/members/a45>

Los Angeles Supervisors

3rd Zev Yaroslavsky (D)
26600 Agoura Road, Suite 100
Calabasas, CA 91302
818-880-9416
zev@bos.lacounty.gov
www.zev.lacounty.gov

Los Angeles Mayor

Eric Garcetti (D)
200 N. Spring St., Suite 303
Los Angeles, CA 90012
213-978-0600
818-778-4990 district office
mayor.garcetti@lacity.org
www.lamayor.org

Malibu Mayor

Lou La Monte
23815 Stuart Ranch Road
Malibu, CA 90265
310-456-2489
llamonte@malibucity.org



www.MalibuBelAirRWF.org
P.O. Box 164, Malibu, CA 90265



I personally would suggest government. They never go to jail.